



Quick Start for GROOV-AR1

Watch the *groov* Quick Start video
<http://op22.co/groov-quick-start>

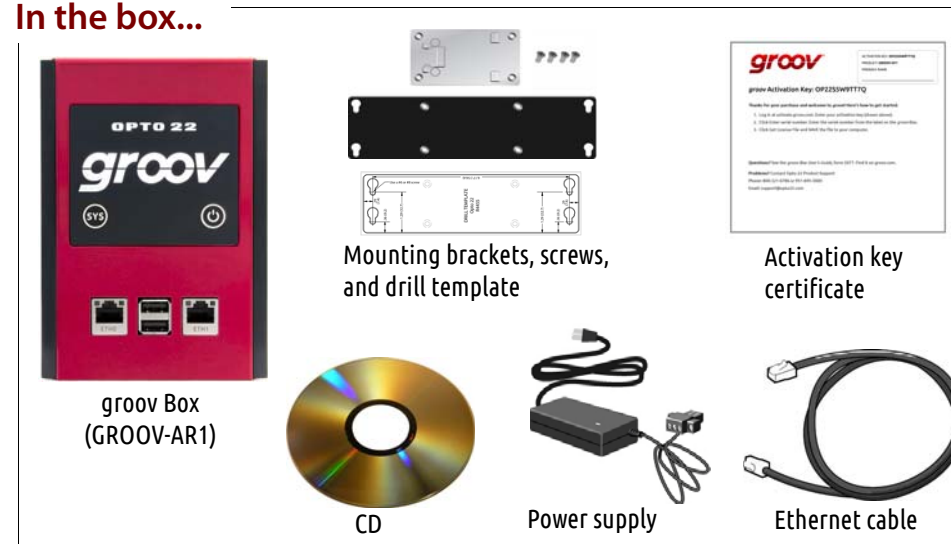
Open →

1 Unpack the *groov* Box

You need:

- A computer with a modern web browser on the same network you'll use for the *groov* Box. We recommend Chrome, Firefox, or Internet Explorer 10 or newer. The network should have DHCP and DNS.
- One of the following on the same network as your computer: a Modbus/TCP-compatible PLC, sensor, drive, meter, or other device; an OPC UA-compatible server communicating with your automation system or equipment; or an Opto 22 SNAP PAC controller running a PAC Control strategy (firmware R9.2a or newer)

In the box...



2 Get started

To set up the *groov* Box, you'll use the *groov* Box components shown below.

When deciding where to place the *groov* Box, make sure there is room around the front, top, and sides of the *groov* Box to allow air to flow freely around the device. You need to be able to see the information on the bottom.

You'll need the activation key for step 6 when you activate your *groov* Box, so make sure to put your activation key certificate in a safe place.



3 Connect to the network

Connect ETH0 to your computer's network.

If you have a separate control network, see form 2104, the *groov* Box User's Guide, on the CD.

For detailed information on setting up your network and setting up communications over the Internet, see form 1796, the *Guide to Networking Opto 22 Products*.



4 Connect the power supply

Plug the small connector on the power supply into the power terminal on the bottom of the *groov* Box, and tighten the screws. Plug the other end into a standard 120 or 240 VAC outlet.



5 Turn on the *groov* Box

Firmly press the On/Off button until the SYS LED lights up (in about one second), then release. Take a look at the LNK ACT light for ETH0; if the cable is properly connected, the LNK ACT light should be on or blinking. (See the illustration in step 3.)

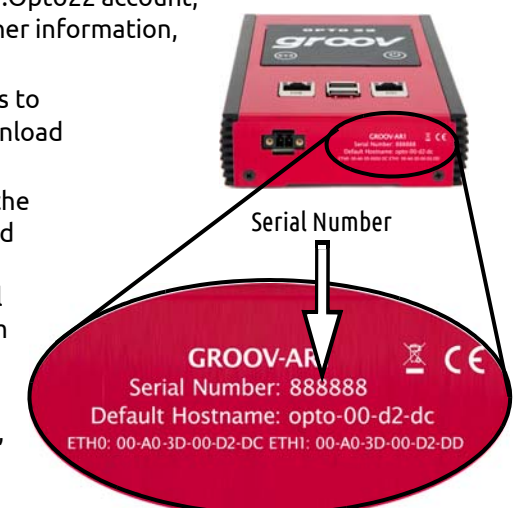
6 Activate the *groov* Box and get the license file

- Open a web browser and go to activate.groov.com.
- Log in using your email address and your My.Opto22 password. You may have set up your free My.Opto22 account when you purchased your *groov* Box. If you don't have a My.Opto22 account, enter your email address and other information, and the account will be created.

- Follow the on-screen instructions to activate your *groov* Box and download the license file.

The activation key is printed on the activation key certificate included with the *groov* Box. When asked to enter the serial number, you'll find it on the label on the bottom of the device.

- After activating the *groov* Box and downloading the license file, return to this Quick Start and continue with step 7.



7 Open *groov*

- Make sure the SYS LED has stopped blinking.
- In your browser, enter `https://` and your *groov* Box's hostname as the URL. For example, if the hostname is `opto-00-d2-dc`, you type `https://opto-00-d2-dc`
- Accept the security warning.

NOTE: If the security warning does not appear, your network configuration is probably unique. Please see the *groov* Box User's Guide.

For Chrome: Click "Proceed anyway."

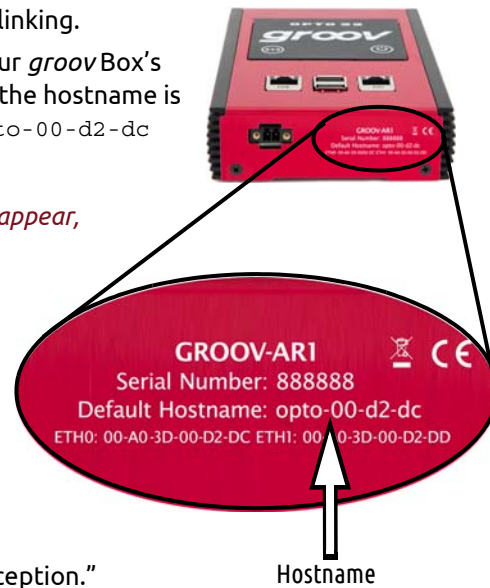
For Firefox:

- Expand "I Understand the Risks."
- Click Add Exception to open the Add Security Exception dialog box.
- Select "Permanently store this exception."
- Click Confirm Security Exception.

For Internet Explorer: Click "Continue to this website (not recommended)."

The **Welcome to *groov*** window opens in your web browser.

- Click Next.



8 Create a *groov* Admin account and install your license

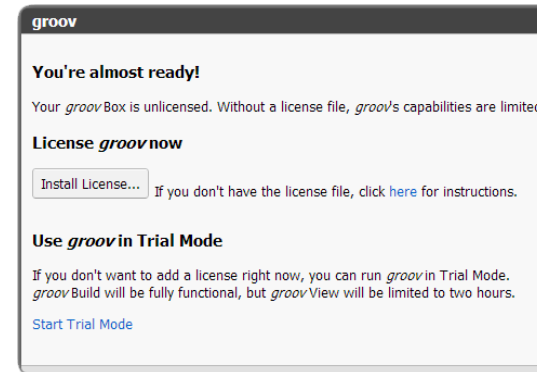
Follow the on-screen instructions to create a username and password for *groov* Admin. The Admin account is for administrative tasks such as changing or editing the network connections and updating the *groov* Box.

CAUTION: Write down your Username and Password, and keep them in a safe place. You will need this information each time you log in. If you lose your login information, you will have to reset the *groov* Box to factory defaults, which will erase your project. There is no password recovery option.

Make sure to install your license file. Without an installed license, *groov* will only work for two hours.

- When prompted, click Install License.
- Browse to the license file, then click Open.

Your license is now installed.



9 Create a *groov* Build account

A Build account lets you create and edit a project in *groov* Build.

- When prompted, enter a new username and password. Enter the password again to confirm.
- Click Create *groov* Build Account.
- Click Go to *groov* Build. *groov* Build opens in your browser.

If you have any trouble opening *groov*, see Troubleshooting in [Form 2027](#), the *groov* User's Guide.

Welcome to
groov
mobile made simple.

That's it! You're finished with initial setup and ready to create your *groov* project.

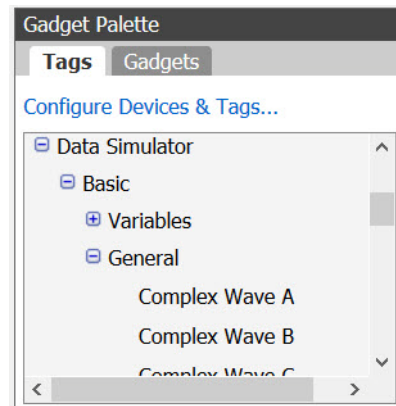
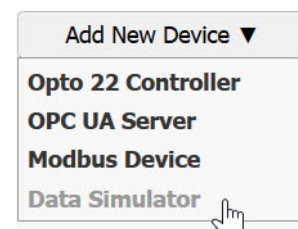
[Go to groovBuild!](#)

10 Get a tag database

You can add a tag database from an Opto 22 controller, an OPC UA compatible server, or a Modbus/TCP slave device. For more information, see [form 2027](#), the *groov* User's Guide.

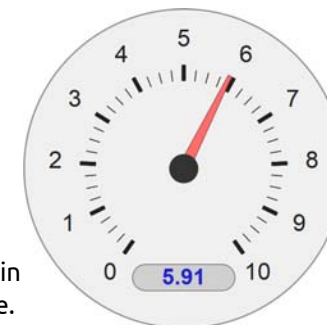
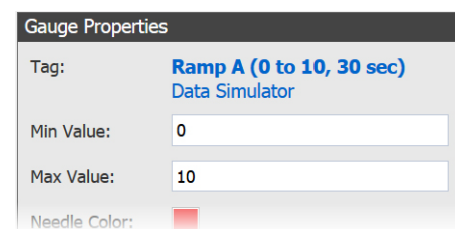
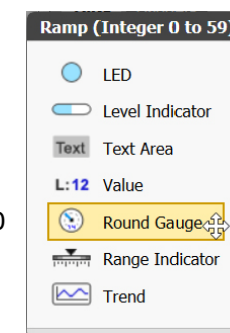
For this demonstration we'll use tags from *groov*'s built-in Data Simulator.

- First, select `Configure > Devices and Tags` in Build.
- Click Add New Device, then select Add New Device > Data Simulator.
- Close the Configure Devices and Tags dialog box and notice that the Data Simulator tags are available to use.



11 Build your operator interface

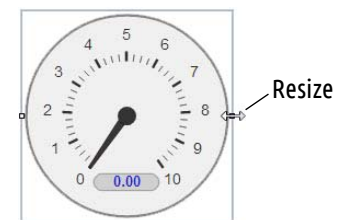
- On the left side under Pages, click Add Page.
- Type a new name for the page, then click OK.
- With the Tags tab selected in the Gadget Palette in the lower-right corner, expand the list of tags for Data Simulator > Basic > General.
- Choose Ramp A (0 to 10, 30 sec).
- Double-click Round Gauge in the pop-up menu.
- In the Gauge Properties in the upper-right corner, enter 0 as the Min Value and 10 as the Max Value.



- Select `File > Save All Changes` and Switch to *groov* View.
- You should now see the Round Gauge running in View. The needle shows the tag's current value.

12 Adjust the handheld layout

- Click the gear symbol in the upper-right corner of View, and select Switch to *groov* Build.
- Click the Handheld tab, and then resize the gadget.
- Switch back to the Desktop & Tablet layout and notice that the gadget maintains its original size in that view.



View your project on a mobile device:

- Make sure the mobile device is on the same network as your *groov* Box.
- Open a browser on the mobile device and enter `https://` and your *groov* Box's hostname as the URL, just as you did on your computer in step 7.
- Accept the security warning.
You'll see the work you just created on your smartphone or tablet. Now you're *groovin*!

Back up your project: As you work on your project, make sure to back up frequently in *groov* Build. For more information, see the *groov* User's Guide.

To get updates at any time: Go to manage.groov.com. For update instructions, see the *groov* Box User's Guide on the *groov* Box CD.