

- Output Voltages from 7.2V to 57V
- Current Share
- Operation to +100°C Baseplate
- Wide Adjustable Output Range

Key Market Segments & Applications

- Servers & Rail Systems
- High End Computers
- Customer Power Supplies

PAF450F280 & PAF600F280

200V to 400VDC Input Full Brick
DC-DC Converters

PAF450F280 & PAF600F280 Features and Benefits

Features

- Wide adjustment range
- Parallel Pin
- High efficiency - up to 91%

Benefits

- Reduces need for custom modules
- Modules can be connected together for higher current
- Reduces Heat Loss

Specifications

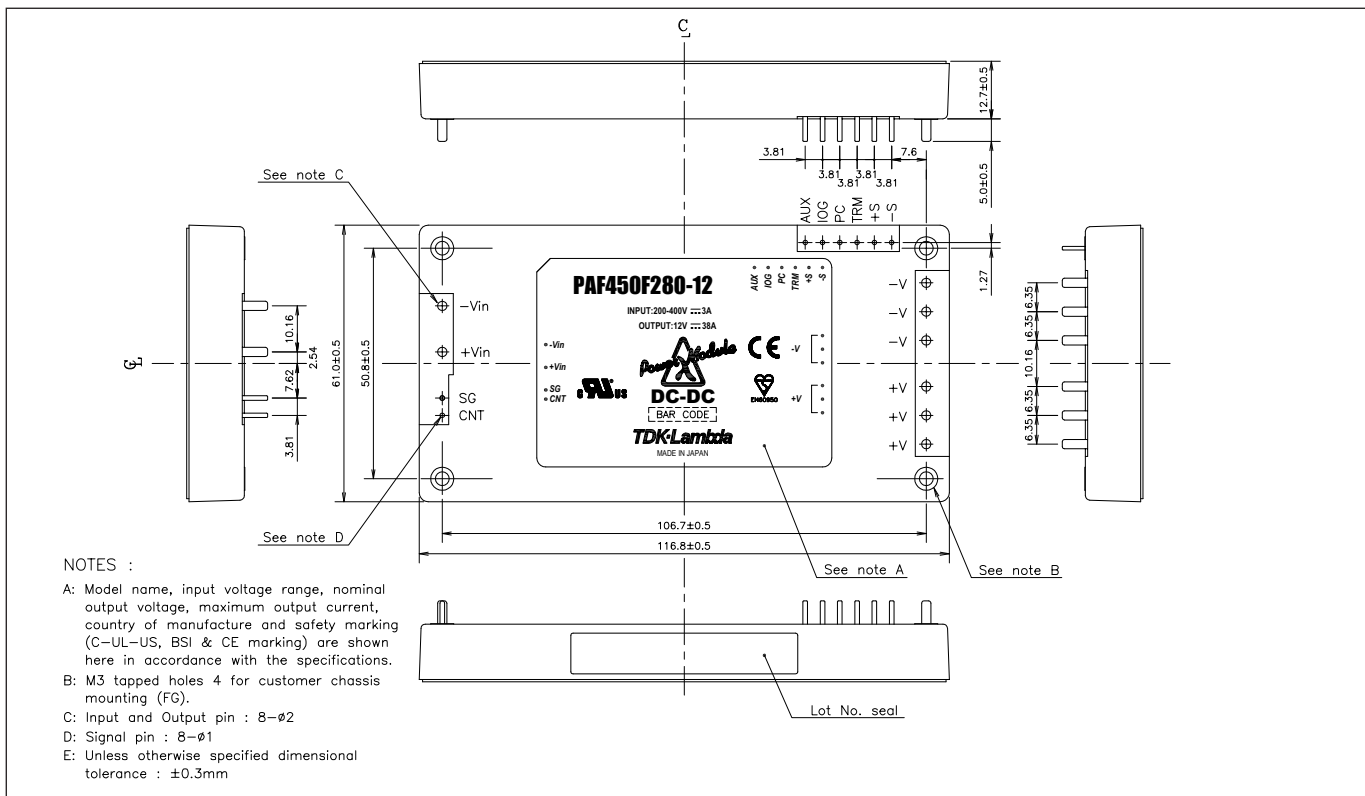
ITEMS	MODEL	PAF600F280-12	PAF600F280-24	PAF600F280-28	PAF600F280-48
		/PAF450F280-12	/PAF450F280-24	/PAF450F280-28	/PAF450F280-48
Nominal Output Voltage	VDC	12	24	28	48
Output Current (Max)	A	50/38	25/19	21.5/16.5	12.5/9.5
Max Output Power	W	600/456	600/456	602/462	600/456
Efficiency (Typ)	%	89/90	91	91	91
Input Voltage Range	VDC	200-400VDC			
Output Voltage Accuracy	%	±1			
Output Voltage Adjustment	VDC	7.2 - 14.4	14.4 - 28.8	16.8 - 33.6	28.8 - 57.6
Max Ripple & Noise	mV	120	240	280	480
Max Line Regulation	mV	48	56	56	96
Max Load Regulation	mV	48	56	56	96
Temperature Coefficient	°C	0.02%/°C			
Overcurrent Protection	%	105 - 140%			
Overvoltage Protection	%	125 - 145%			
Signals & Control	-	Remote sense, remote On/Off, Parallel Pin, Inverter Good, 10-14V Auxiliary voltage			
Baseplate Temperature	-	-40°C to +100°C Baseplate: (See derating chart)			
Humidity (non condensing)	-	5 - 95% RH Operating, 5 - 95% RH Non Operating			
Cooling	-	Conduction (See Installation Manual for heatsink selection)			
Isolation Voltage	-	Input to Baseplate: 2500VAC (20mA); Input to Output 3000VAC for 1 min.; Output to Baseplate: 500VDC for 1 min			
Shock	-	196.1m/s ²			
Vibration	-	Non Operating, 10-55Hz (sweep for 1 min.) Amplitude 0.825mm constant (Max 49 m/s ²) X,Y,Z 1 hour each			
Safety Agency Approvals	-	IEC/UL/CSA/EN62368-1, 60950-1, CE Mark			
Weight (Typ)	g	200			
Size (WxHxD)	mm	61 x 12.7 x 116.8			
Warranty	yr	2			

Notes: See Installation Manual for full details, test methods of parameters and application notes.

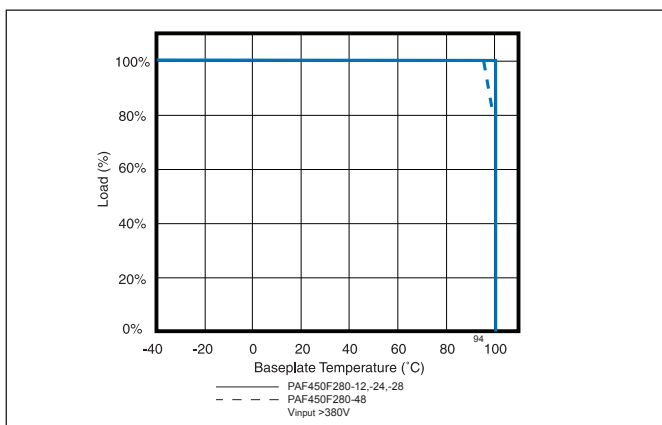
Pinout	
Pin Description	Function
-Vin	Negative Input Terminal
+Vin	Positive Input Terminal
CNT	Remote On/Off Negative Terminal
+V	Positive Output Terminal
-V	Negative Output Terminal
AUX	10-14V Aux Voltage
PC	Parallel Control Connection
TRIM	Output Adjustment Trim Pin
+S	Positive Remote Sense
-S	Negative Remote Sense
SG	Remote ON/OFF Return

Options	
Suffix	Description
Blank	M3 tapped mounting inserts (4)
/T	3.3mm non-threaded inserts (4)

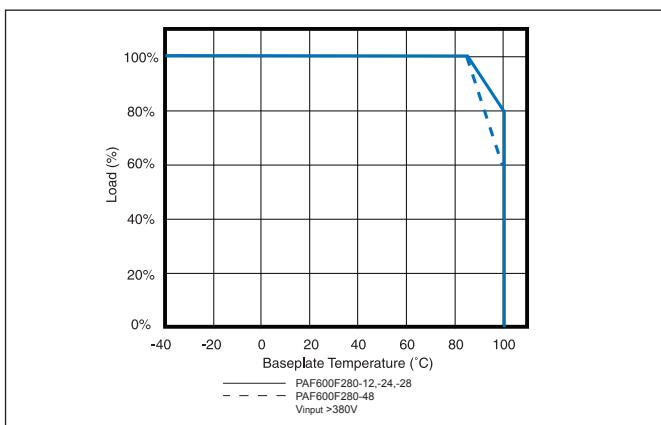
Outline Drawing PAF450F280



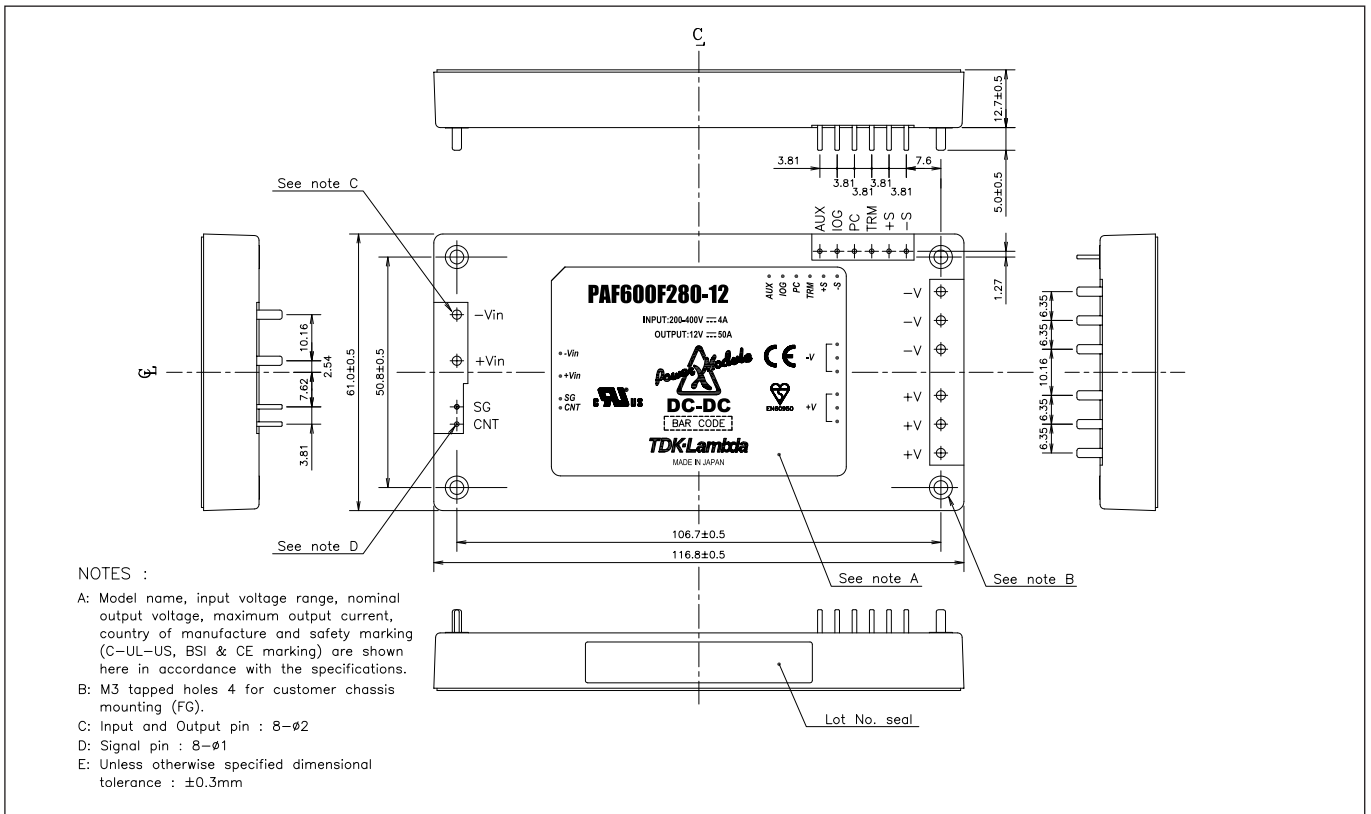
Derating Curve PAF450F280



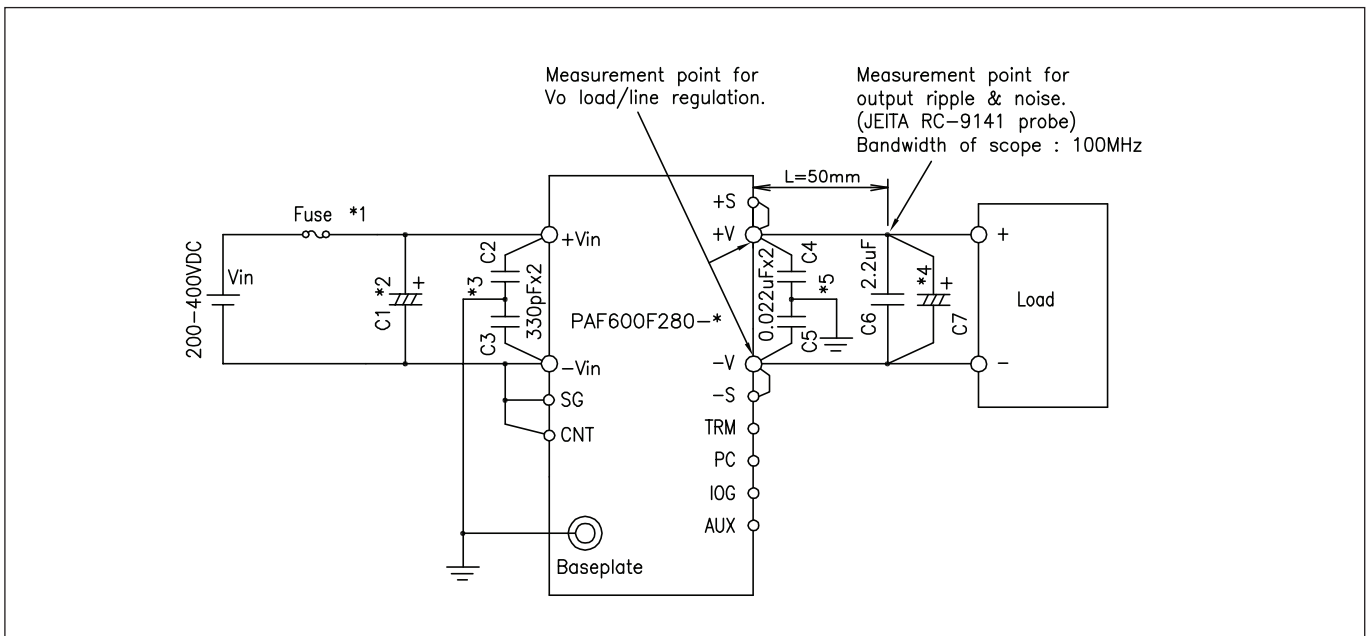
Derating Curve PAF600F280



Outline Drawing PAF600F280



Connection Example





TDK-Lambda France SAS

3 Avenue du Canada
 Parc Technopolis
 Bâtiment Sigma
 91940 les Ulis
 France
 Tel: +33 1 60 12 71 65
 Fax: +33 1 60 12 71 66
 france@fr.tdk-lambda.com
 www.emea.lambda.tdk.com/fr



Italy Sales Office

Via Giacomo Matteotti 62
 20092 Cinisello Balsamo (MI)
 Italy
 Tel: +39 02 61 29 38 63
 Fax: +39 02 61 29 09 00
 info.italia@it.tdk-lambda.com
 www.emea.lambda.tdk.com/it



Netherlands

info@nl.tdk-lambda.com
 www.emea.lambda.tdk.com/nl



TDK-Lambda Germany GmbH

Karl-Bold-Strasse 40
 77855 Achem
 Germany
 Tel: +49 7841 666 0
 Fax: +49 7841 5000
 info.germany@de.tdk-lambda.com
 www.emea.lambda.tdk.com/de



Austria Sales Office

Aredstrasse 22
 2544 Leobersdorf
 Austria
 Tel: +43 2256 655 84
 Fax: +43 2256 645 12
 info@at.tdk-lambda.com
 www.emea.lambda.tdk.com/at



Switzerland Sales Office

Eichtalstrasse 55
 8634 Hombrechtikon
 Switzerland
 Tel: +41 44 850 53 53
 Fax: +41 44 850 53 50
 info@ch.tdk-lambda.com
 www.emea.lambda.tdk.com/ch



Nordic Sales Office

Haderslevvej 36B
 DK-6000 Kolding
 Denmark
 Tel: +45 8853 8086
 info@dk.tdk-lambda.com
 www.emea.lambda.tdk.com/dk



TDK-Lambda UK Ltd.

Kingsley Avenue
 Ilfracombe
 Devon EX34 8ES
 United Kingdom
 Tel: +44 (0) 12 71 85 66 66
 Fax: +44 (0) 12 71 86 48 94
 info@uk.tdk-lambda.com
 www.emea.lambda.tdk.com/uk



TDK-Lambda Ltd.

1 Alexander Yanai
 Segula
 Petah-Tikva
 Israel
 Tel: +9 723 902 4333
 Fax: +9 723 902 4777
 info@tdk-lambda.co.il
 www.emea.lambda.tdk.com/il



C.I.S.

Commercial Support:
 Tel: +7 (495) 665 2627
Technical Support:
 Tel: +7 (812) 658 0463
 info@tdk-lambda.ru
 www.emea.lambda.tdk.com/ru

Local Distribution

Ihr Vertriebspartner:



HY-LINE Power Components
 Vertriebs GmbH
 Inselkammerstr. 10
 D-82008 Unterhaching
 ☎ +49 89/ 614 503 -10
 power@hy-line.de

HY-LINE AG
 Hochstrasse 355
 CH-8200 Schaffhausen
 ☎ +41 52 647 42 00
 info@hy-line.ch