



Single Output 250W Low Profile Power Supplies

Features	Benefits
• High efficiency up to 90%	• Compact convection cooled device
• 30mm high	• Slim design for use in panels
• Wide range AC input	• Allows global use
• Convection cooled	• No fan noise
• High grade component selection	• 3 year warranty



Specification		
Model	CUS250LD	
AC Input Voltage (3)	VAC	85 - 265VAC (300VAC for 5s)
Input Frequency	Hz	47 - 63Hz
DC Input Voltage	VDC	120 - 370VDC (No safety certification)
Inrush Current (cold start)	A	20A at 115VAC, 40A at 230VAC
Power Factor (1)	-	Meets EN61000-3-2 (Typical PF 0.98/0.95)
Input Current (115/230VAC)	A	2.8 / 1.4
Temperature Coefficient	-	<0.02%/°C
Overcurrent Protection	-	> 105%
Overvoltage Protection (2)	V	3.3V: 4 - 5.25V, 4.2V: 5 - 6.5V, 5V: 5.75 - 7.5V, 12V: 13.8 - 16.2V, 24V: 27.6 - 32.4V
Hold Up Time	ms	20ms
Leakage Current (240VAC 60Hz)	mA	<0.75mA
Remote Sense	-	No
LED Indicator	-	Green LED = On
Operating Temperature (3)	°C	-25°C to +70°C. Derate down to 50% load from +40°C to +70°C
Storage Temperature	°C	-30°C to +75°C
Operating Humidity (non condensing)	%	30 - 90% RH
Storage Humidity (non condensing)	%	10 - 90% RH
Cooling	-	Convection
Withstand Voltage	-	Input to Ground 2kVAC, Input to Output 3kVAC, Output to Ground 500VAC for 1 min.
Isolation Resistance	-	>100M at 25°C & 70%RH, Output to Ground 500VDC
Vibration (non operating)	-	10 - 55Hz: 19.6m/s ² constant sweep 1 min X, Y, Z for 1 hour
Shock	-	< 196.1 m/s ² (20G)
Immunity	-	IEC61000-4-2 (lv 2, 3), -3 (lv3), -4 (lv 3), -5 (lv3, 4), -6 (lv 3), -8 (lv 4), -11
Safety Agency Certifications	-	IEC/UL/CSA/EN62368-1, 60950-1 (cTUVus), CE Mark
Conducted & Radiated EMI	-	EN55022-B, FCC--B
Weight (Typ)	g	700
Size (LxWxH)	mm	198 x 102 x 30
Warranty	yrs	3

Notes:

(1) 115 / 230VAC input

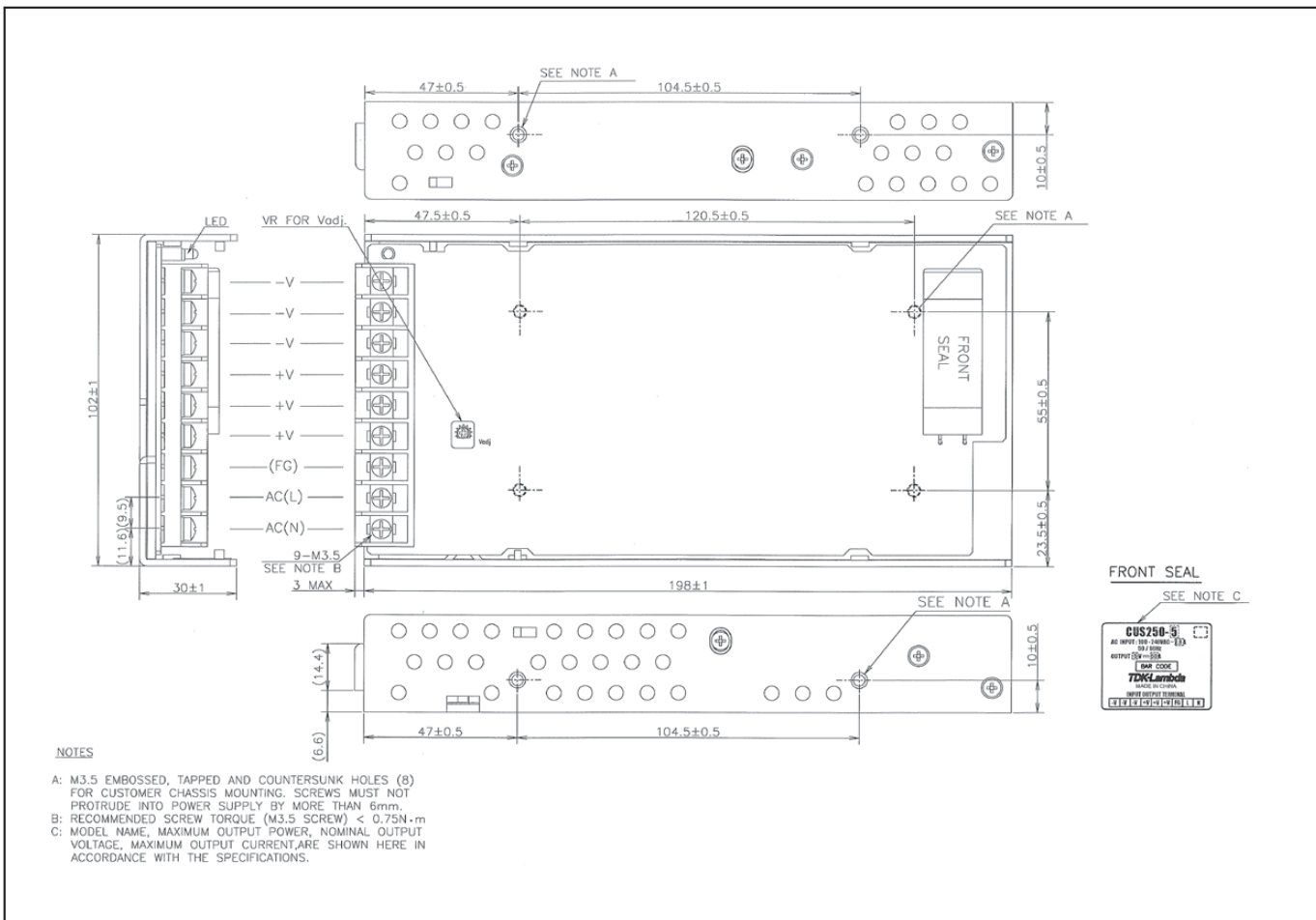
(2) Cycle AC to reset

(3) See derating curves on page 3. Output derating vs input voltage - derate linearly to 80% load from 115VAC to 85VAC input (**not for CUS250LD-3**)

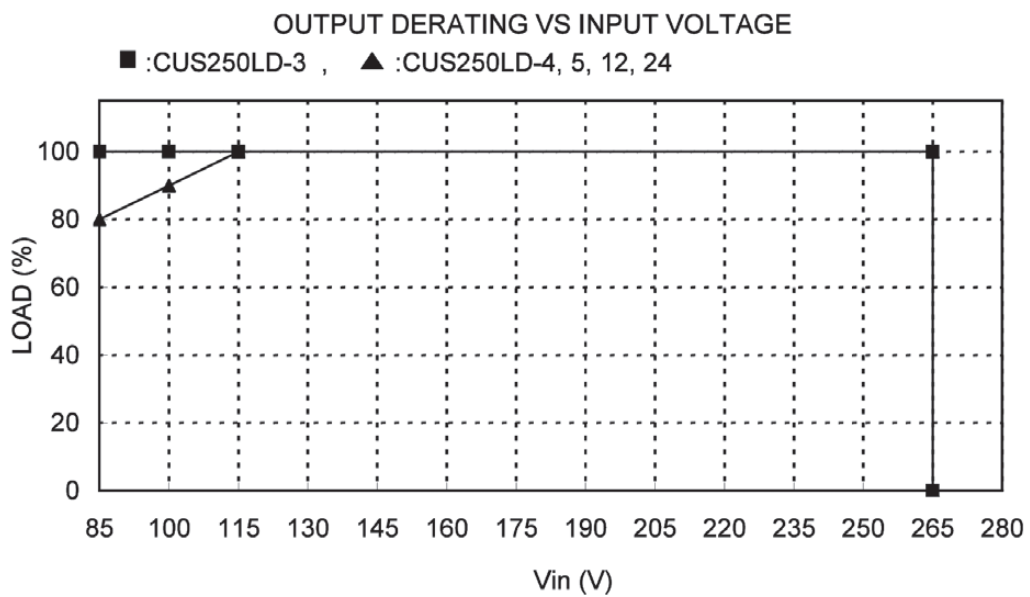
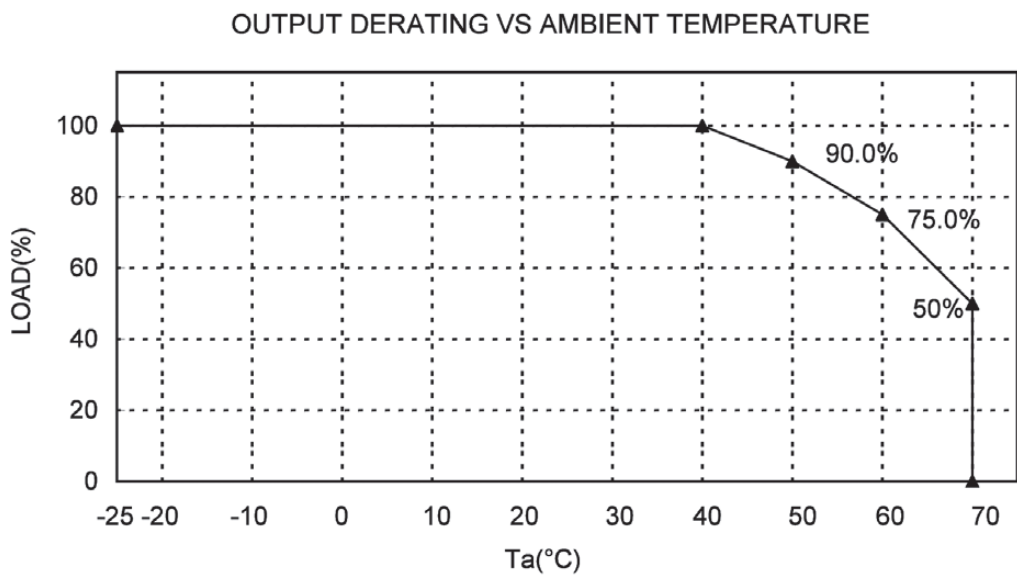
Model Selector

Model	Voltage	Adjust Range (V)	Max Current (A)	Max Power (W)	Load Reg (mV)	Line Reg (mV)	Ripple Noise (mV)	Efficiency (typ) % ⁽¹⁾
CUS250LD-3	3.3V	2.97 - 3.63	50	165	40	20	120	86 / 88
CUS250LD-4	4.2V	3.78 - 4.62	50	210	40	20	120	87 / 89
CUS250LD-5	5V	4.5 - 5.5	50	250	40	20	120	88 / 90
CUS250LD-12	12V	10.8 - 13.2	21	252	96	48	120	88 / 90
CUS250LD-24	24V	21.6 - 26.4	10.5	252	192	96	150	88 / 90

Outline Drawing CUS250LD Series



Output Derating Curve CUS250LD





TDK-Lambda France SAS

3 Avenue du Canada
Parc Technopolis
Bâtiment Sigma
91940 les Ulis
France
Tel: +33 1 60 12 71 65
Fax: +33 1 60 12 71 66
france@fr.tdk-lambda.com
www.emea.lambda.tdk.com/fr



Italy Sales Office

Via Giacomo Matteotti 62
20092 Cinisello Balsamo (MI)
Italy
Tel: +39 02 61 29 38 63
Fax: +39 02 61 29 09 00
info.italia@it.tdk-lambda.com
www.emea.lambda.tdk.com/it



Netherlands

info@nl.tdk-lambda.com
www.emea.lambda.tdk.com/nl



TDK-Lambda Germany GmbH

Karl-Bold-Strasse 40
77855 Achern
Germany
Tel: +49 7841 666 0
Fax: +49 7841 5000
info.germany@de.tdk-lambda.com
www.emea.lambda.tdk.com/de



Austria Sales Office

Aredstrasse 22
2544 Leobersdorf
Austria
Tel: +43 2256 655 84
Fax: +43 2256 645 12
info@at.tdk-lambda.com
www.emea.lambda.tdk.com/at



Switzerland Sales Office

Eichtalstrasse 55
8634 Hombrechtikon
Switzerland
Tel: +41 44 850 53 53
Fax: +41 44 850 53 50
info@ch.tdk-lambda.com
www.emea.lambda.tdk.com/ch



Nordic Sales Office

Haderslevvej 36B
DK-6000 Kolding
Denmark
Tel: +45 8853 8086
info@dk.tdk-lambda.com
www.emea.lambda.tdk.com/dk



TDK-Lambda UK Ltd.

Kingsley Avenue
Ilfracombe
Devon EX34 8ES
United Kingdom
Tel: +44 (0) 12 71 85 66 66
Fax: +44 (0) 12 71 86 48 94
info@uk.tdk-lambda.com
www.emea.lambda.tdk.com/uk



TDK-Lambda Ltd.

1 Alexander Yanai
Segula
Petah-Tikva
Israel
Tel: +9 723 902 4333
Fax: +9 723 902 4777
info@tdk-lambda.co.il
www.emea.lambda.tdk.com/il



C.I.S.

Commercial Support:

Tel: +7 (495) 665 2627

Technical Support:

Tel: +7 (812) 658 0463

info@tdk-lambda.ru

www.emea.lambda.tdk.com/ru

Local Distribution

Ihr Vertriebspartner:



HY-LINE Power Components
Vertriebs GmbH
Inselkammerstr. 10
D-82008 Unterhaching
☎ +49 89/ 614 503 -10
power@hy-line.de

HY-LINE AG
Hochstrasse 355
CH-8200 Schaffhausen
☎ +41 52 647 42 00
info@hy-line.ch