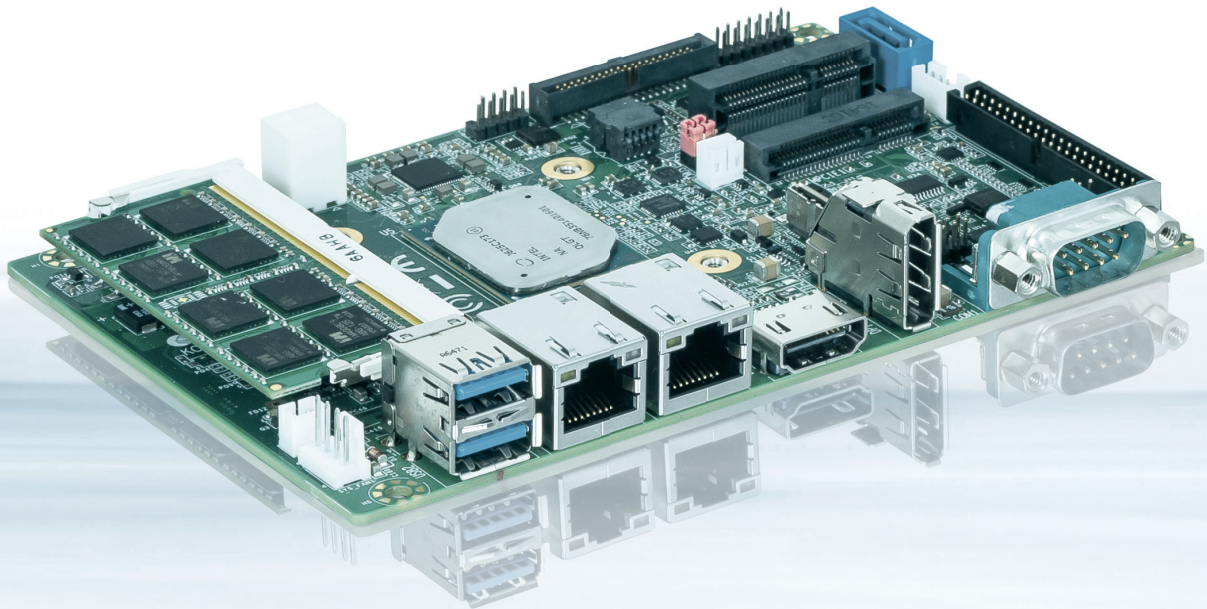


3,5-SBC-APL



3.5" EMBEDDED SINGLE BOARD COMPUTER WITH INTEL® ATOM™ E39XX SERIES AND CELERON® N3350 CPUS

- ▶ Intel® Atom™ E39xx and N3350 SOC (2 or 4 cores), TDP: 6-12 W
- ▶ LVDS 18/24 bit dual channel and display port 1.2
- ▶ SO-DIMM socket DDR3L-1867 memory (up to 8 GByte)
- ▶ 3.5" single board with eMMC NAND Flash build-in
- ▶ HDMI/DP/LVDS triple display and 2x RJ-45 LAN port

Vertrieb durch
Distribution by **HY-LINE®**
COMPUTER COMPONENTS
Inselkammerstr. 10
D-82008 Unterhaching
Tel.: +49 89 614 503 40
www.hy-line.de

POSSIBILITIES START HERE



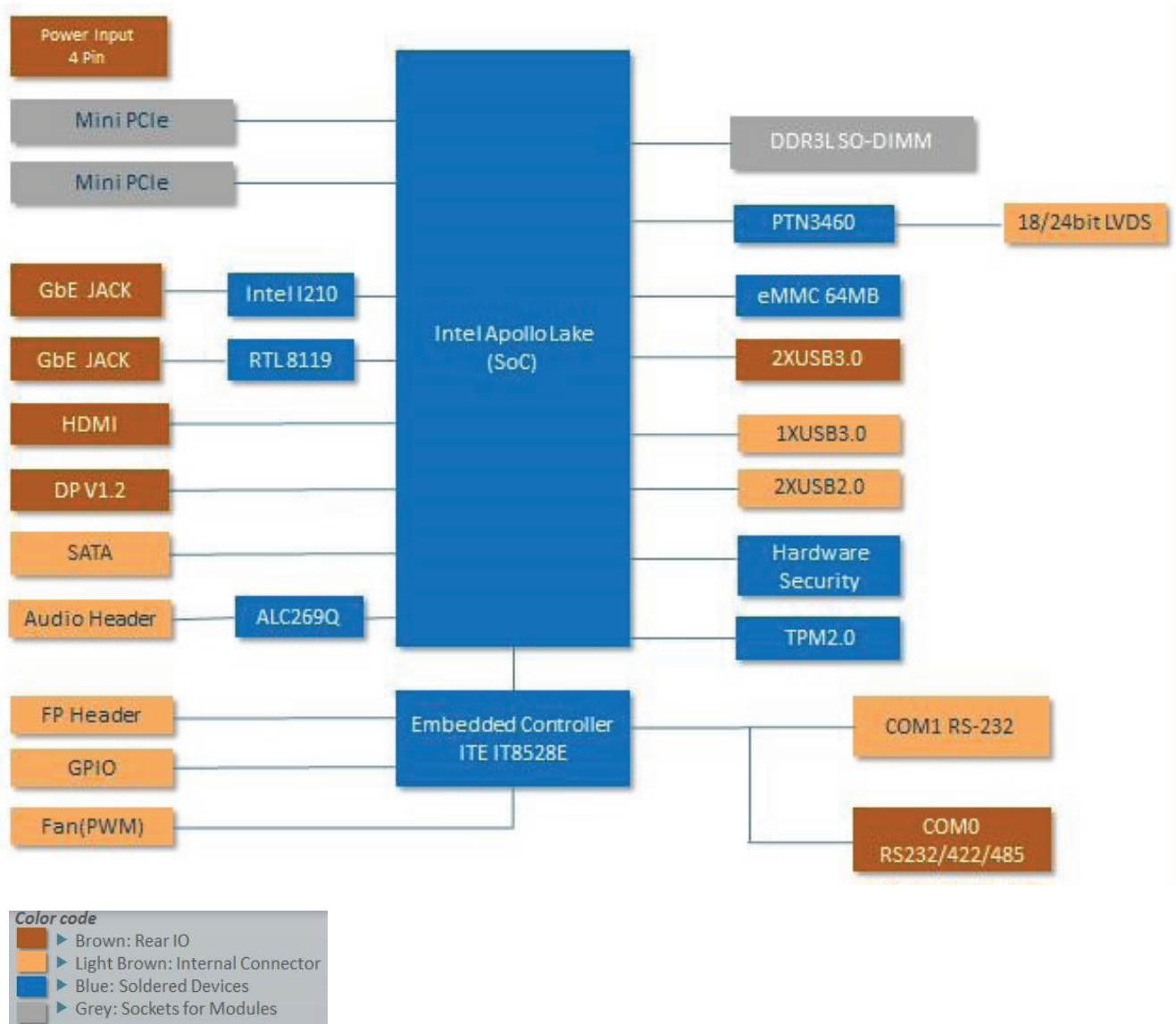
3,5-SBC-APL

Typical Applications

- ▶ POS/POI: Higher Graphics and CPU core performance, Low power, multi display support
- ▶ Medical/Connectivity: Higher Graphics and CPU core performance, longevity
- ▶ Industrial Automation: Wide range of I/Os, compact size, longevity
- ▶ Digital signage: Multi display support, low power, wide range of I/Os
- ▶ Future-oriented Devices: Display Port and LVDS, low power, compact size

The 3.5-SBC-APL is part of the Security Solution Product Line the Single Board Computer is prepared for Application Protection, License Creation, Delivery, Management and Tracking, Implementation of license models as well as the assignment of privileges and access levels.

▶ BLOCK DIAGRAM 3,5-SBC-APL



► TECHNICAL INFORMATION

PROCESSOR	Intel® Atom™ E39xx series and Celeron® N3350
MEMORY	1x DDR3L 1.35 V SODIMM 1867 MHz (up to 8 GByte)
GRAPHICS INTERFACE	3x Independent Displays (DP/HDMI/LVDS)
SPECIAL	TPM, Hardware Security, eMMC NAND Flash Built-in
SATA PORTS	1x SATA Gen 2.0
mPCIe SLOT	2x (1x Half size, 1x Full size)
SERIAL PORTS	1 x RS232/RS422/RS485 (External), 1x RS232(Internal)
LAN PORTS	2x RJ-45 LAN Port (with Transformer & 2 LED indicators)
USB PORTS	2x USB 3.0 (Rear), 2x USB 2.0 (Internal)
AUDIO	HD Analog audio interface (Line-In/Line-Out/SPK-Out)
POWER SUPPLY	12 VDC + 4 pin (Internal Input Power)
MTBF	tbd
SAFETY	IEC 60950-1: 2005
COOLING SOLUTIONS	Passive and active cooling solutions
OPERATING TEMPERATURE	0 °C to 60 °C
REGULATORY	Comply with Emission: EN55022
DIMENSIONS	3.5"
OPERATING SYSTEMS	Win10, Win10 IOT, Linux
BIOS	AMI Aptio V UEFI
SUPPORTED MODULES	3.5" SBC-APL 43011-XXXX-XXX

► CORPORATE OFFICES

EUROPE, MIDDLE EAST & AFRICA

Lise-Meitner-Str. 3-5
86156 Augsburg
Germany
Tel.: + 49 821 4086 0
Fax: + 49 821 4086 111
info@kontron.com

NORTH AMERICA

14118 Stowe Drive
Poway, CA 92064-7147
USA
Tel.: + 1 888 294 4558
Fax: + 1 858 677 0898
info@us.kontron.com

ASIA PACIFIC

1-2F, 10 Building, No. 8 Liangshuihe 2nd Street,
Economical & Technological Development Zone,
Beijing, 100176, P.R.China
Tel.: +86 10 63751188
Fax: +86 10 83682438
info@kontron.cn