



- Output Voltages from 7.2V to 57V
- Current Share
- Operation to +100°C Baseplate
- Wide Adjustable Output Range

## Key Market Segments & Applications

- Servers & Rail Systems
- High End Computers
- Customer Power Supplies

## PAF450F280 & PAF600F280

200V to 400VDC Input Full Brick  
DC-DC Converters

Ihr Vertriebspartner:

**HY-LINE**<sup>®</sup>  
POWER COMPONENTS

Inselkammerstraße 10  
D-82008 Unterhaching  
Tel: +49 (0)89 614 503 10  
Fax +49 (0)89 614 503 20  
E-Mail: power@hy-line.de  
URL: www.hy-line.de

### PAF450F280 & PAF600F280 Features and Benefits

#### Features

- Wide adjustment range
- Parallel Pin
- High efficiency - up to 91%

#### Benefits

- Reduces need for custom modules
- Modules can be connected together for higher current
- Reduces Heat Loss

### Specifications

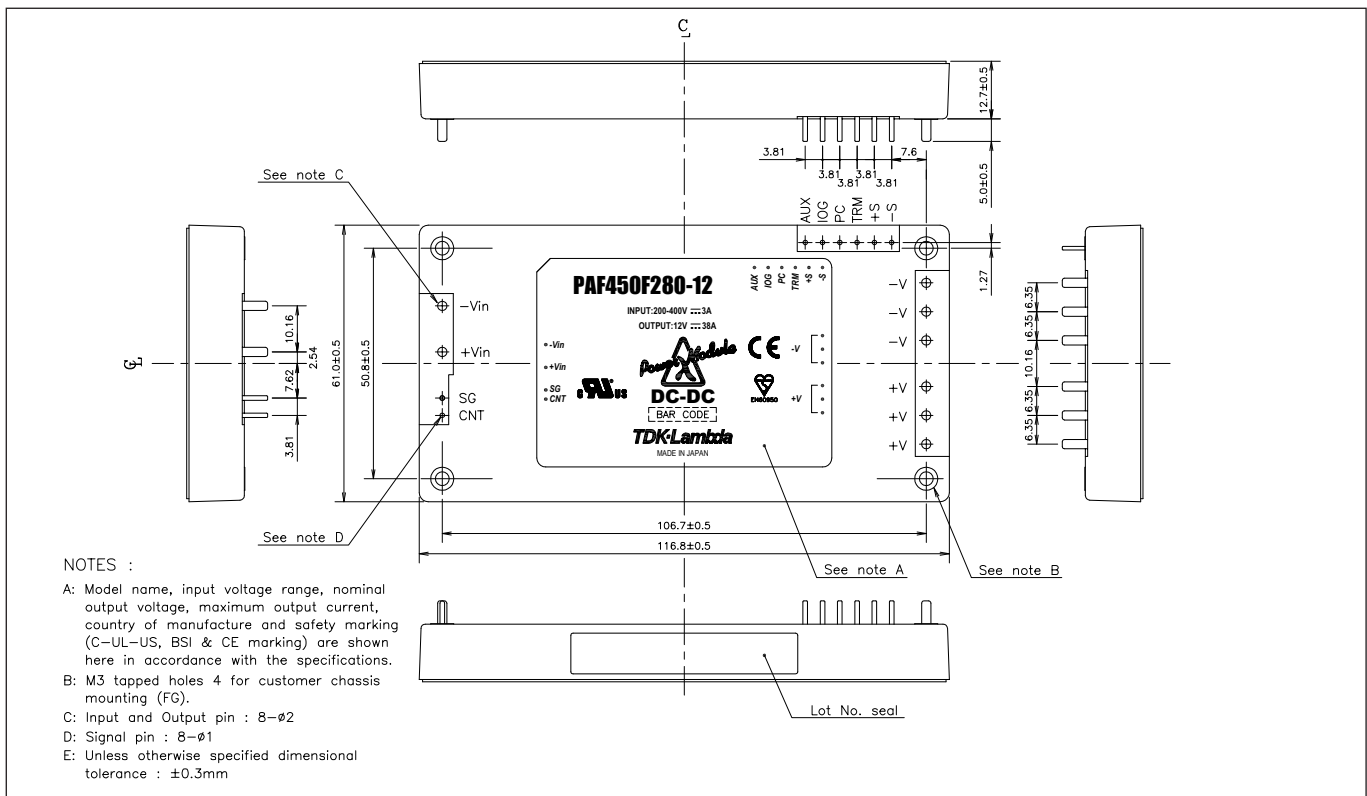
MODEL		PAF600F280-12 /PAF450F280-12	PAF600F280-24 /PAF450F280-24	PAF600F280-28 /PAF450F280-28	PAF600F280-48 /PAF450F280-48
ITEMS					
Nominal Output Voltage	VDC	12	24	28	48
Output Current (Max)	A	50/38	25/19	21.5/16.5	12.5/9.5
Max Output Power	W	600/456	600/456	602/462	600/456
Efficiency (Typ)	%	89/90	91	91	91
Input Voltage Range	VDC	200-400VDC			
Output Voltage Accuracy	%	±1			
Output Voltage Adjustment	VDC	7.2 - 14.4	14.4 - 28.8	16.8 - 33.6	28.8 - 57.6
Max Ripple & Noise	mV	120	240	280	480
Max Line Regulation	mV	48	56	56	96
Max Load Regulation	mV	48	56	56	96
Temperature Coefficient	°C	0.02%/°C			
Overcurrent Protection	%	105 - 140%			
Overvoltage Protection	%	125 - 145%			
Signals & Control	-	Remote sense, remote On/Off, Parallel Pin, Inverter Good, 10-14V Auxiliary voltage			
Baseplate Temperature	-	-40°C to +100°C Baseplate: (See derating chart)			
Humidity (non condensing)	-	5 - 95% RH Operating, 5 - 95% RH Non Operating			
Cooling	-	Conduction (See Installation Manual for heatsink selection)			
Isolation Voltage	-	Input to Baseplate: 2500VAC (20mA); Input to Output 3000VAC for 1 min.; Output to Baseplate: 500VDC for 1 min			
Shock	-	196.1m/s <sup>2</sup>			
Vibration	-	Non Operating, 10-55Hz (sweep for 1 min.) Amplitude 0.825mm constant (Max 49 m/s <sup>2</sup> ) X,Y,Z 1 hour each			
Safety Agency Approvals	-	UL60950-1, CSA60950-1, EN60950-1, CE LVD			
Weight (Typ)	g	200			
Size (WxHxD)	mm	61 x 12.7 x 116.8			
Warranty	yr	2			

**Notes:** See Installation Manual for full details, test methods of parameters and application notes.

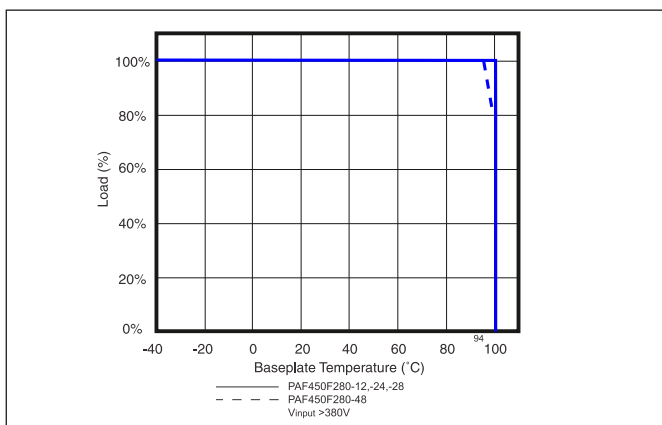
Pinout	
Pin Description	Function
-Vin	Negative Input Terminal
+Vin	Positive Input Terminal
CNT	Remote On/Off Negative Terminal
+V	Positive Output Terminal
-V	Negative Output Terminal
AUX	10-14V Aux Voltage
PC	Parallel Control Connection
TRIM	Output Adjustment Trim Pin
+S	Positive Remote Sense
-S	Negative Remote Sense
SG	Remote ON/OFF Return

Options	
Suffix	Description
Blank	M3 tapped mounting inserts (4)
/T	3.3mm non-threaded inserts (4)

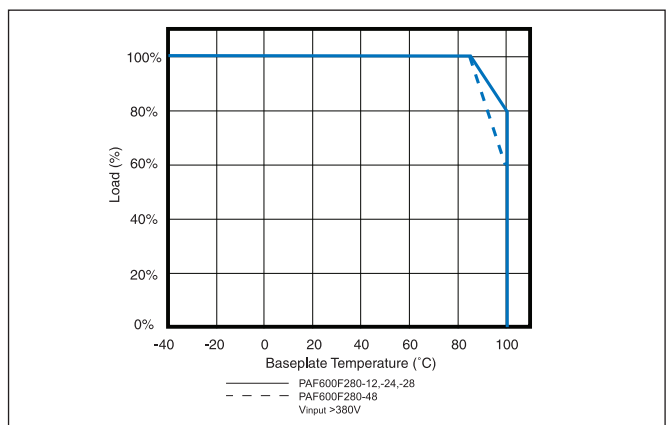
Outline Drawing PAF450F280



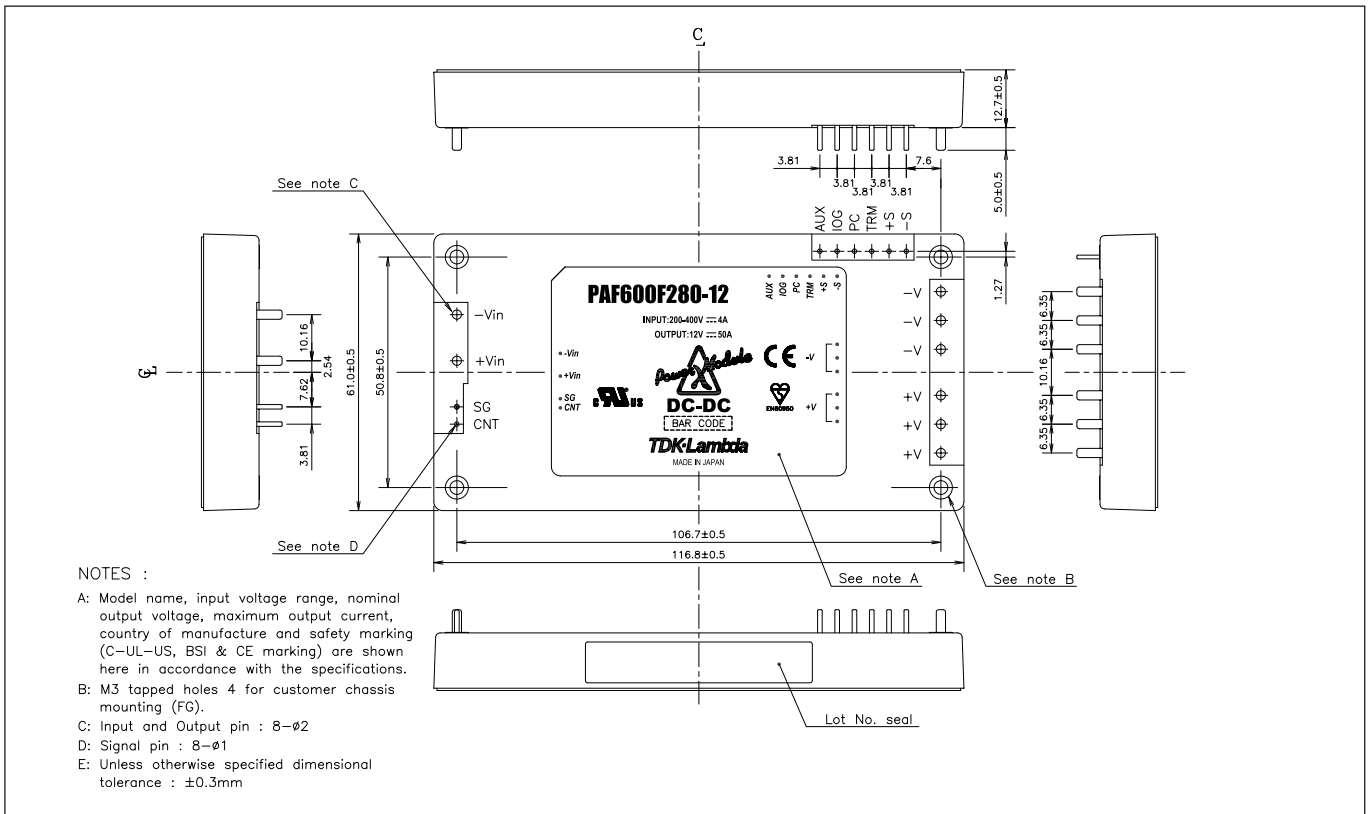
Derating Curve PAF450F280



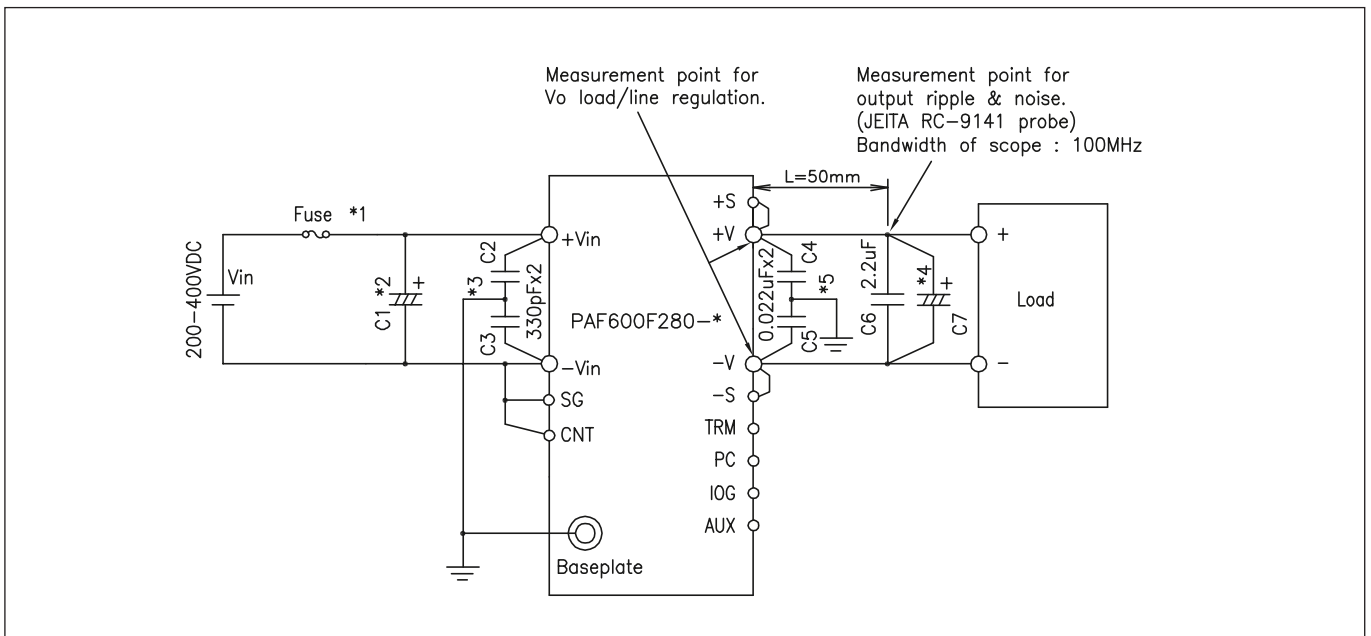
Derating Curve PAF600F280



## Outline Drawing PAF600F280



## Connection Example



**TDK-LAMBDA EMEA**

[www.emea.tdk-lambda.com](http://www.emea.tdk-lambda.com)



**TDK-Lambda France SAS**

Route de Grivery  
ZAC des Delaches  
CS 41077  
91978 Courtaboeuf Cedex  
France  
Tel: +33 1 60 12 71 65  
Fax: +33 1 60 12 71 66  
[france@fr.tdk-lambda.com](mailto:france@fr.tdk-lambda.com)  
[www.fr.tdk-lambda.com](http://www.fr.tdk-lambda.com)



**Italy Sales Office**  
Via dei Lavoratori 128/130  
20092 Cinisello Balsamo (MI)  
Italy  
Tel: +39 02 61 29 38 63  
Fax: +39 02 61 29 09 00  
[info.italia@it.tdk-lambda.com](mailto:info.italia@it.tdk-lambda.com)  
[www.it.tdk-lambda.com](http://www.it.tdk-lambda.com)



**TDK-Lambda Germany GmbH**

Karl-Bold-Strasse 40  
77855 Achern  
Germany  
Tel: +49 7841 666 0  
Fax: +49 7841 5000  
[info.germany@de.tdk-lambda.com](mailto:info.germany@de.tdk-lambda.com)  
[www.de.tdk-lambda.com](http://www.de.tdk-lambda.com)



**Austria Sales Office**  
Aredstrasse 22  
2544 Leobersdorf  
Austria  
Tel: +43 2256 655 84  
Fax: +43 2256 645 12  
[info.germany@de.tdk-lambda.com](mailto:info.germany@de.tdk-lambda.com)  
[www.de.tdk-lambda.com](http://www.de.tdk-lambda.com)



**TDK-Lambda UK Ltd.**

Kingsley Avenue  
Ilfracombe  
Devon EX34 8ES  
United Kingdom  
Tel: +44 (0) 12 71 85 66 66  
Fax: +44 (0) 12 71 86 48 94  
[powersolutions@uk.tdk-lambda.com](mailto:powersolutions@uk.tdk-lambda.com)  
[www.uk.tdk-lambda.com](http://www.uk.tdk-lambda.com)



**Nemic Lambda Ltd.**

Kibbutz  
Givat Hashlosha 48800  
Israel  
Tel: +9 723 902 4333  
Fax: +9 723 902 4777  
[info@nemic.co.il](mailto:info@nemic.co.il)  
[www.nemic.co.il](http://www.nemic.co.il)



**Russia**

Technical Support:  
St Petersburg  
Tel: +7 (812) 6580463  
Sales:  
Moscow  
Tel: +7 (499) 7557732  
[info@tdk-lambda.ru](mailto:info@tdk-lambda.ru)  
[www.tdk-lambda.ru](http://www.tdk-lambda.ru)

**LOCAL DISTRIBUTION**

Ihr Vertriebspartner:  
**HY-LINE®**  
POWER COMPONENTS

Inselkammerstraße 10  
D-82008 Unterhaching  
Tel: +49 (0)89 614 503 10  
Fax: +49 (0)89 614 503 20  
E-Mail: [power@hy-line.de](mailto:power@hy-line.de)  
URL: [www.hy-line.de](http://www.hy-line.de)