

nominal voltage: 8,4V
max. charge voltage: 10,5V

conditions
 at standard charge
 (0,1C / 20°C)

capacity
 nominal : 250mAh
 typical: 260mAh
 minimal: 250mAh

discharge at 0,2C
 7,0V end discharge voltage
 ambient temperature 20°C

max. discharge current: 750mA

ambient temperature
 20....50°C

charge
 standard charge: charge current 25mA charge time 15hrs
 rapid charge : charge current 75mA charge time 5hrs
 fast charge : charge current 250mA charge time 1,2hrs

recommended charge termination control parameter:
 -dV: 35....70mV
 dT/dt: 0,8....1°C per min
 TCO: 45....50°C

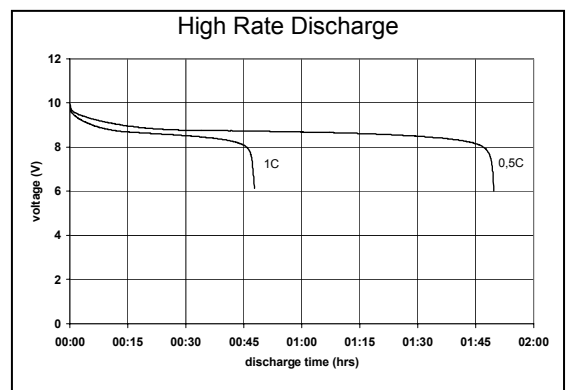
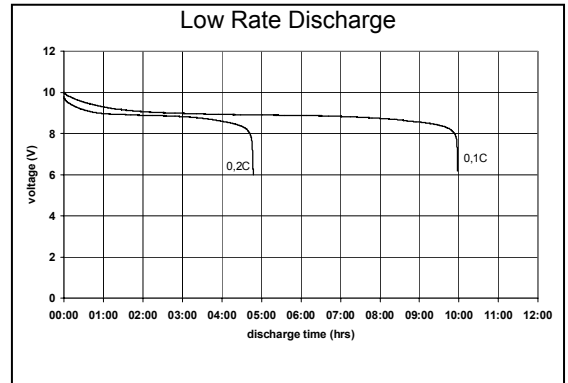
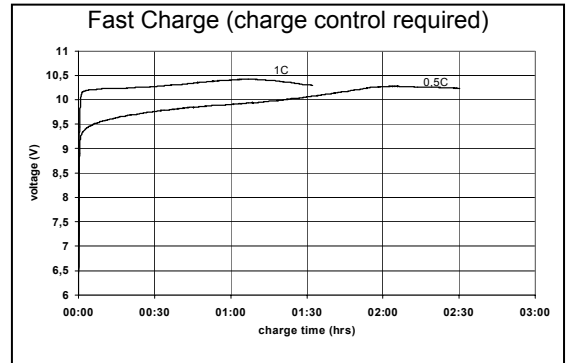
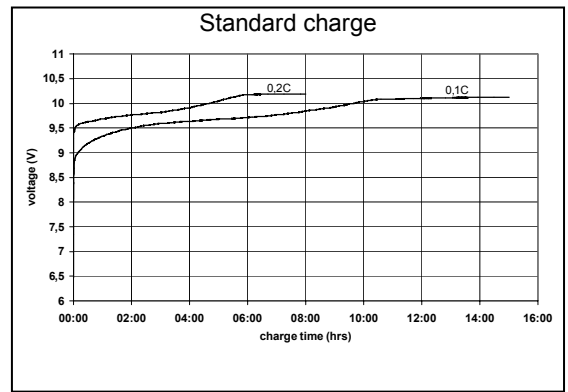
trickle charge current: 5....10mA (recommended)

continuous overcharge: max. 12mA no conspicuous deformation, no leakage

internal resistance: ~ 0,5Ohms at 1000Hz, battery fully charged

life expectancy: >500 cycles IEC standard

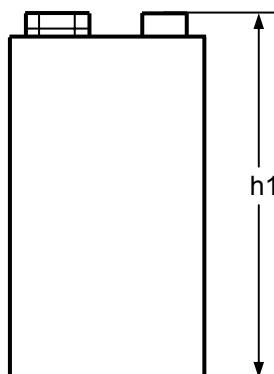
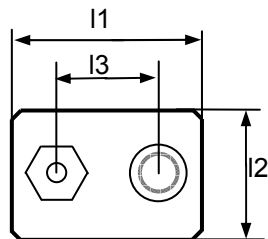
ambient temperature range: 0....45°C standard charge
 10....40°C fast charge
 -20....60°C discharge
 -20....35°C storage



HY-LINE®

POWER COMPONENTS

HY-LINE AG Tel.: +41 (0) 52 647 42 00
 Gründenstrasse 82 Fax: +41 (0) 52 647 42 01
 CH-8247 Flurlingen E-Mail: power@hy-line.ch
 Schweiz URL: www.hy-line.ch



mechanical specifications

cell dimensions (with sleeve)
 length l1: 26,5 – 2,0mm
 length l2: 16,5 – 2,0mm
 length l3: 12,7+/-0,25mm
 height h1: 48,0 +/- 0,5mm
 weight: approx. 46g

	specifications for model/type:	9V – NiMH 250mAh
	Ansmann drawing number / part number:	5030331
	drawn by / date:	Gramlich / 27.04.2004